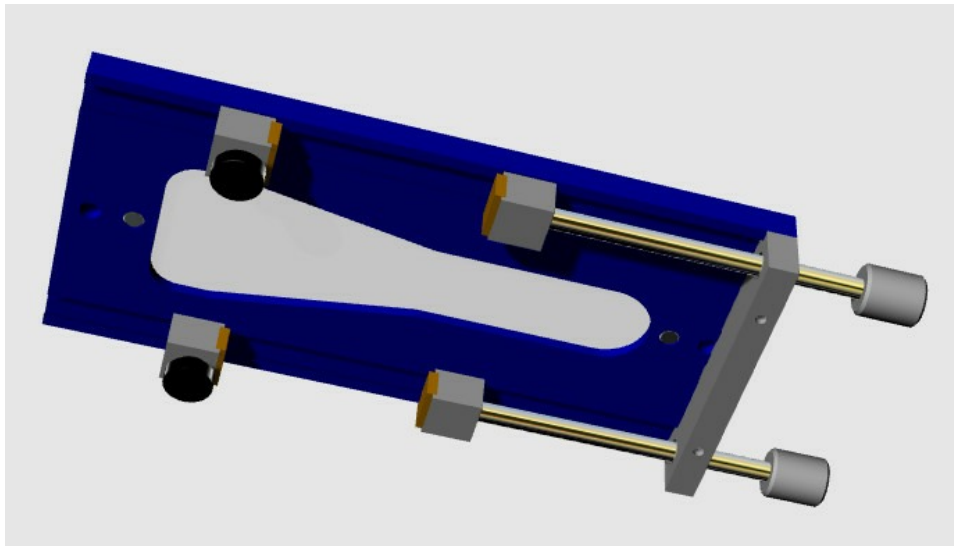
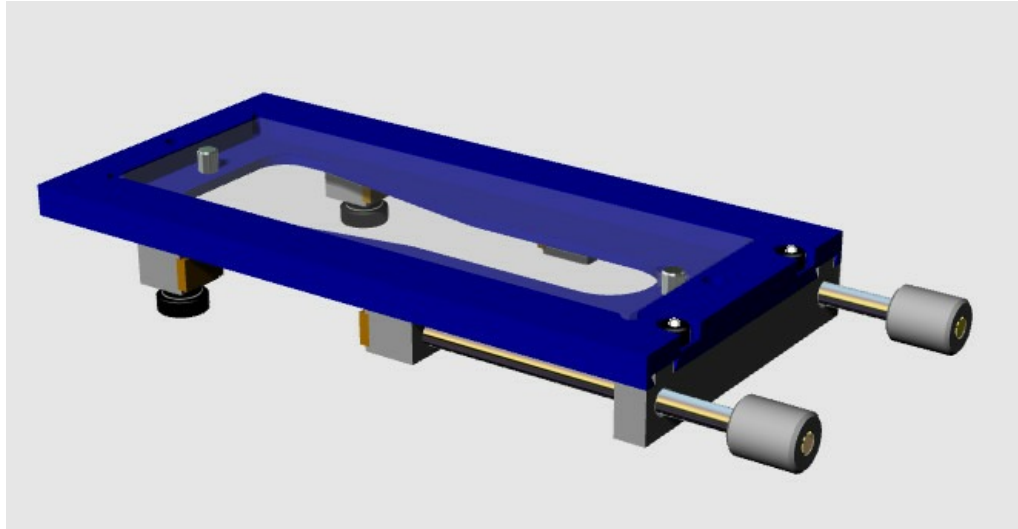


EDGE VISE



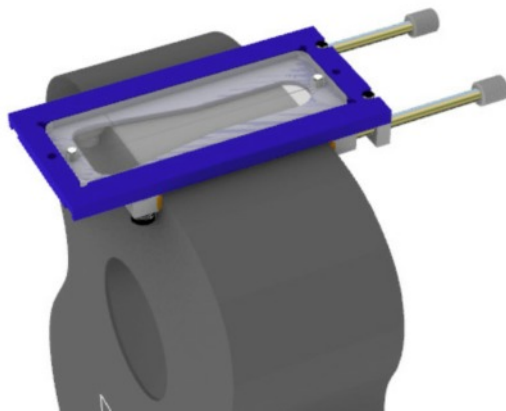
EDGE VISE

The Edge Vise is a platform from which to route out either the End Graft, Dovetail or Bolt On neck feature. This design is unique in that the tool is clamped onto the side of the guitars on its edges where most of the strength is and lies absolutely flat on the surface without one side lifting or coming loose during the routing operation. The tools design allows for multi templates to be used without changing the tool configuration.

S A F E T Y

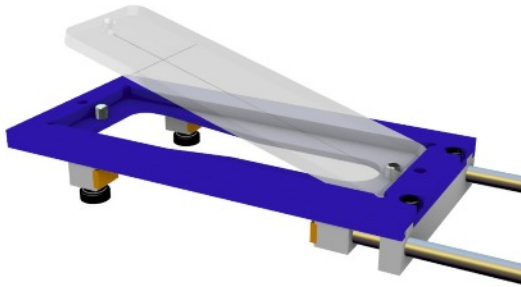
1. **ALWAYS** wear safety glasses or a face shield.
2. **DO NOT** wear loose clothing, gloves, neckties, or jewelry. Wear protective cover on hair and prevent contact with moving tool. These items can get caught in tool during operation and pull operator into moving part.
3. **KEEP** children away.
4. **KEEP** visitors at a safe distance.
5. **WEAR** a dust mask all times.
6. **ALWAYS** turn off motor before making any adjustments.
7. **NEVER** leave running tool unattended.
8. **ALWAYS** make sure all screws are tight and any hardware is removed from or near tool before starting.
9. **SECURE** all work pieces before starting.
10. **ALWAYS** keep knife edges sharp.
11. **ALWAYS** keep work area clean.
12. **DO NOT** operate tool if under the influence of drugs or alcohol.

S E T U P

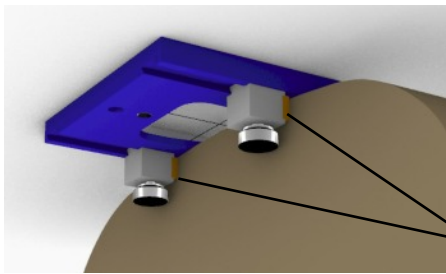


The edge vise is designed to clamp onto the edge of a guitar where there is most support. The alignment template provides precise perpendicular and edge alignment on the guitar. The jig can be used for either the neck joint or the end graph.

SET UP (Continued)



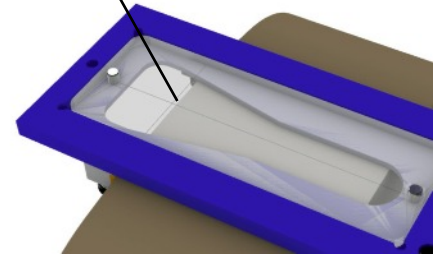
To remove the template back press at the round hole so the template can rotate about the oblong hole.



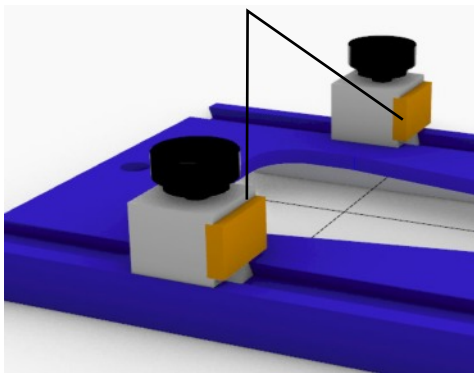
Adjust the two fixed dogs so that the edge line on the template lines up with the edge of the guitar

Fixed dogs

Template line



Rubber pads



When adjusting for lining up to the edge of the guitar keep in mind to account for of rubber pad compression during clamping process.

CAUTION

Remember to take in account the curvature of the guitar body when adjusting the height of the router bit.

LuthierTOOL Company LLC
Luthiertool.com