

Dove Tail Plate Modification

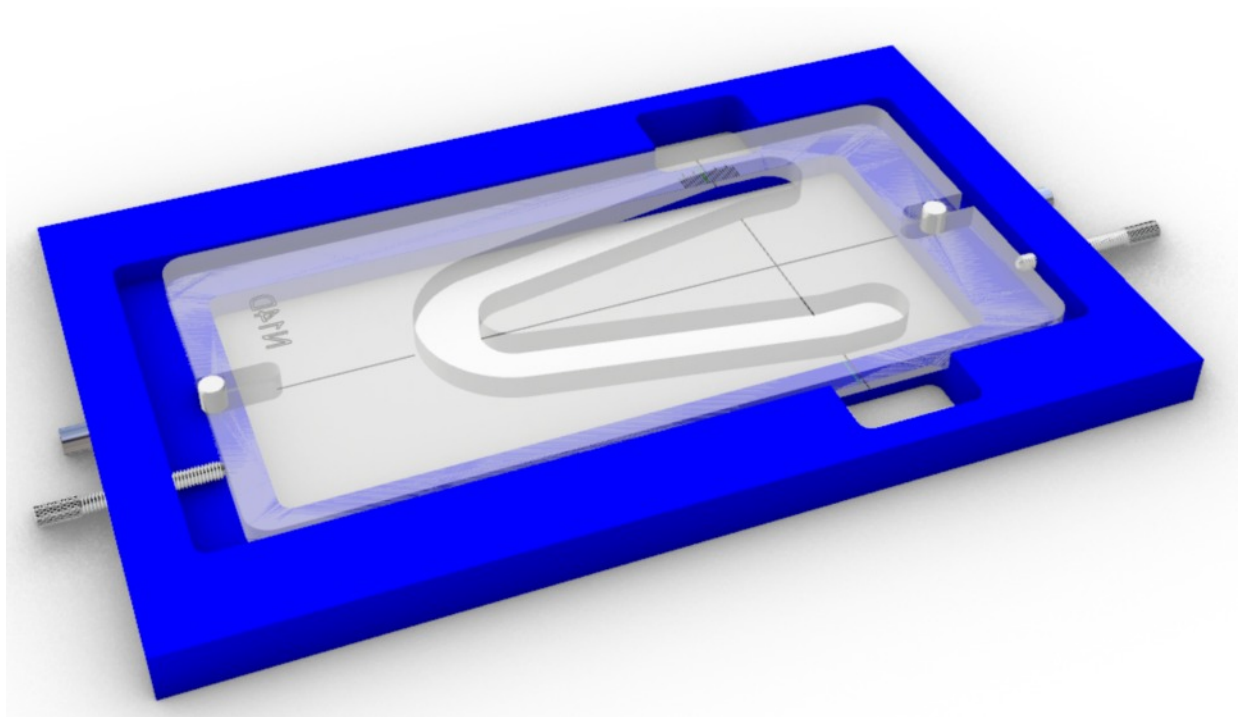
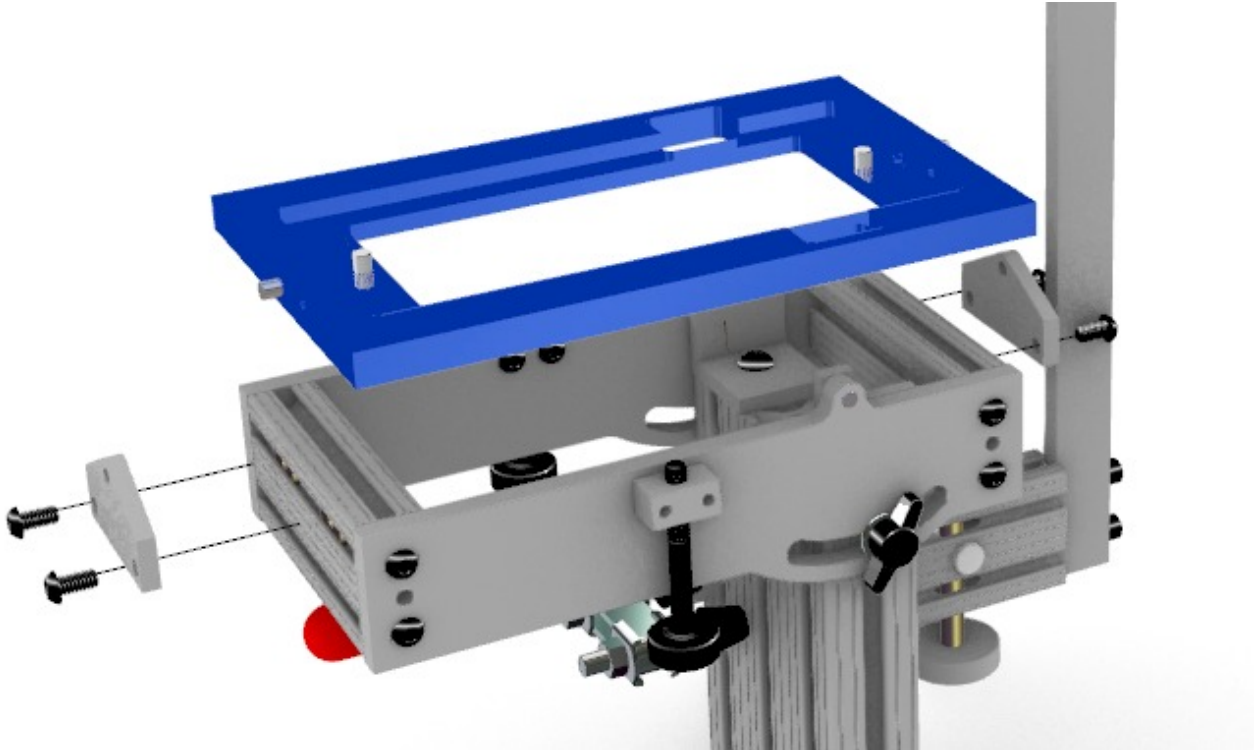


PLATE REMOVAL

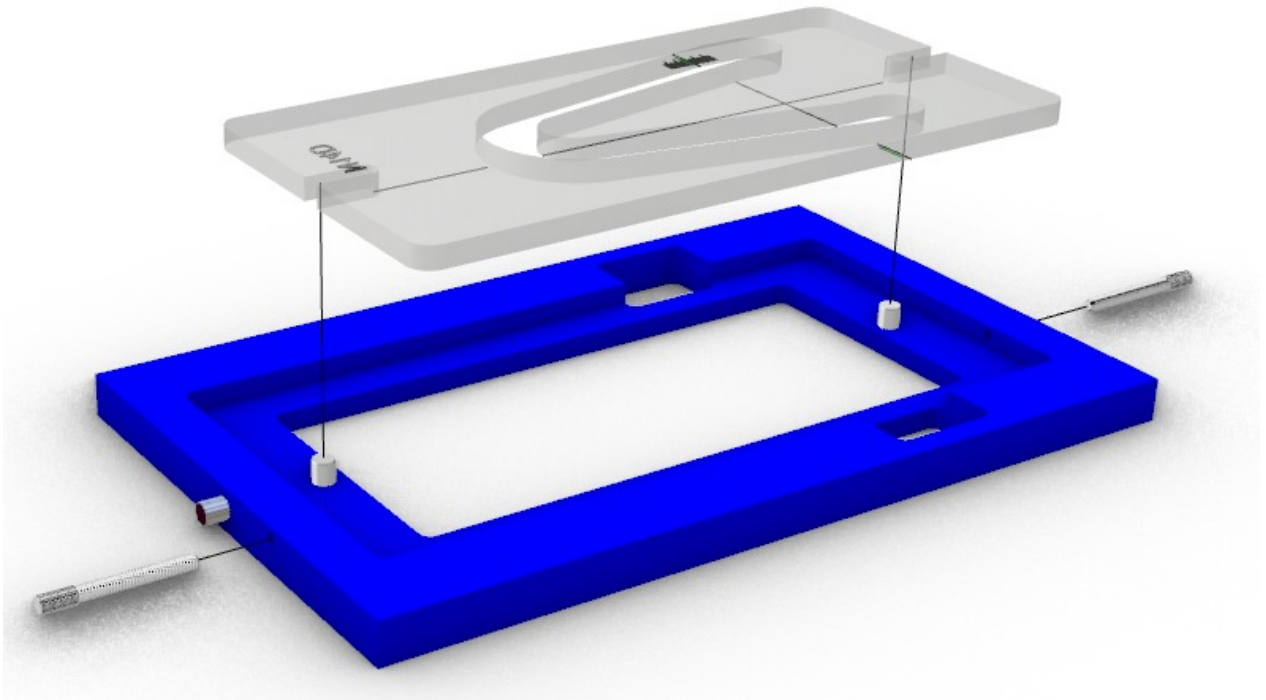


Remove the four screws from the hinge plate as shown and remove them from the top plate. Only ship the top plate to LuthierTOOL company LLC. We will drill and tap the two holes and ship the modified plate back with the appropriate screw.

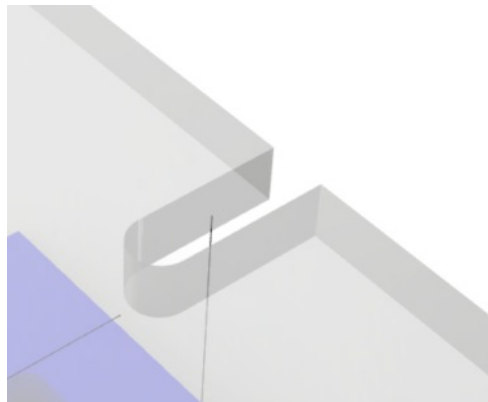
The appropriate template are sold separately either the 12 or 14 fret Dove Tail. These will also be included in the shipping package.

Once you receive the top plate re-assemble back as shown then go through the alignment procedure.

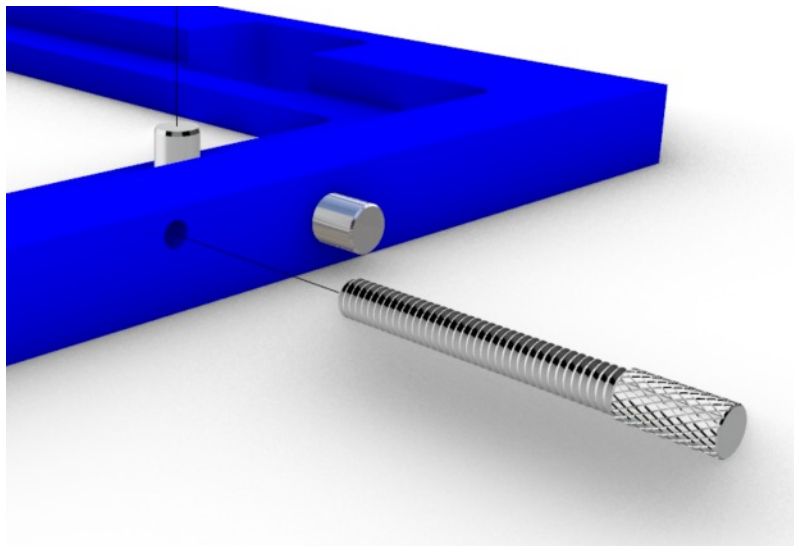
D E S C R I P T I O N



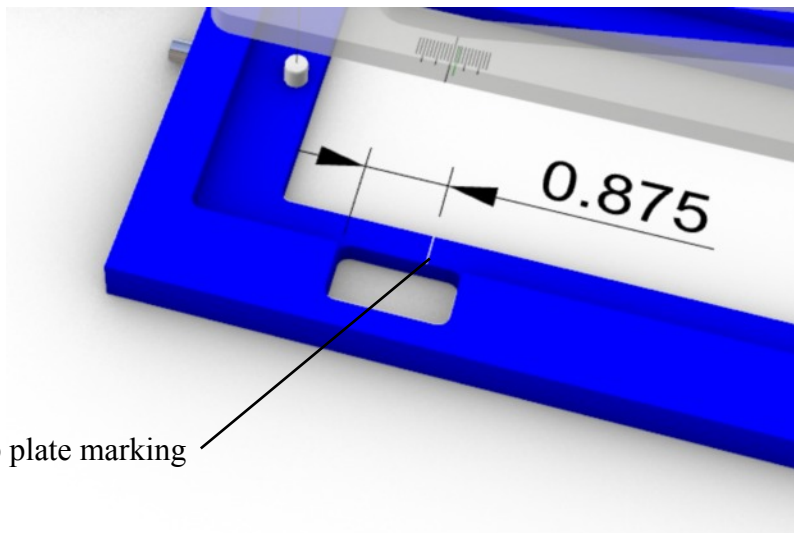
This modification is to allow precise fit and adjustability for the Dove Tail at the neck (tenon) side. The openings for the pins are slotted at both ends so that the template can move up or down in the top plate cavity.



The two knurled screws at both end will keep the template in place while you route.



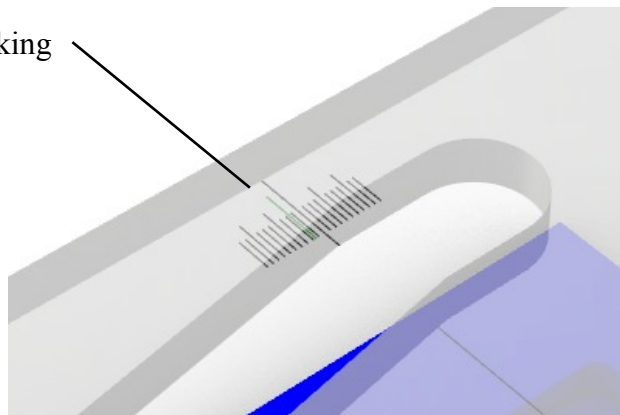
A mark is made on the top plate so that it can be used for the scale markings on the template.

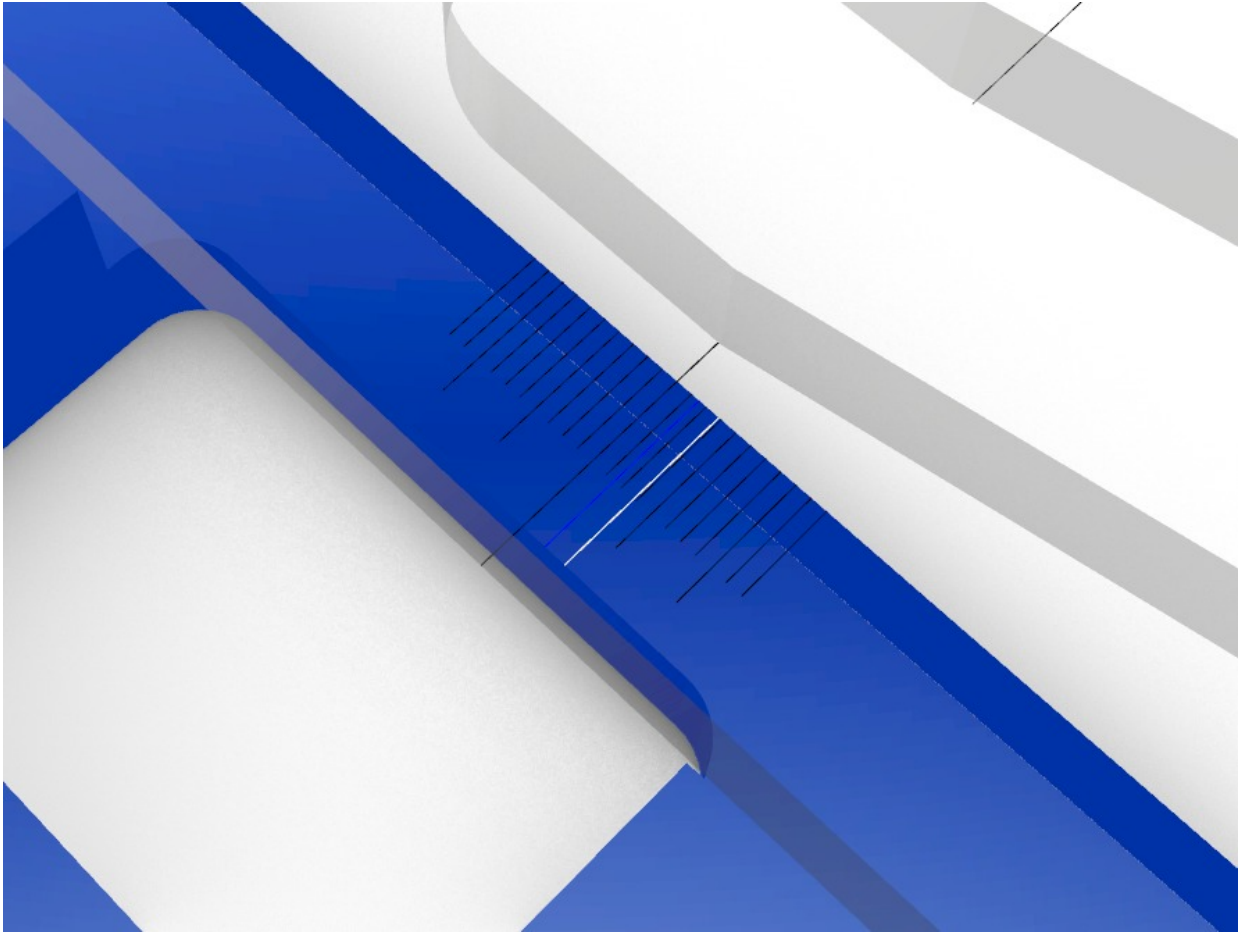


Top plate marking

The template has a scale markings in $1/32$ increments. This can be used as a reference point when adjusting the dove tail fit.

Template scale marking





With this modification you should be able to adjust the Dove Tail for fit a either the mortise side and now at the tenon side. The total adjustability is plus $\frac{3}{8}$ and minus $\frac{3}{8}$